

leca.no



# Materials Library

User manual for Revit® software



## INDEX

<b>1</b>	<b>DOCUMENT VERSION</b> .....	<b>3</b>
<b>2</b>	<b>USER MANUAL</b> .....	<b>4</b>
<b>2.1</b>	<b>INTRODUCTION</b> .....	<b>4</b>
<b>2.2</b>	<b>DESCRIPTION</b> .....	<b>4</b>
<b>2.3</b>	<b>COMPATIBLE VERSIONS</b> .....	<b>4</b>
<b>3</b>	<b>IMPORT OF THE PROPERTIES OF LECA-MATERIALS (TECHNICAL DATA)</b> .....	<b>5</b>
<b>4</b>	<b>IMAGE MAPPING</b> .....	<b>7</b>
<b>5</b>	<b>MATERIALS QUANTIFICATION</b> .....	<b>7</b>
<b>6</b>	<b>COMMENTS</b> .....	<b>7</b>

## 1 DOCUMENT VERSION

Version	Date	Description
V.00	20/07/2022	First version published

## 2 USER MANUAL

### 2.1 INTRODUCTION

The Materials Library manual is for technicians and consulting engineers from the AEC industry; Architectural, Engineering and Construction. This manual is a support document for the utilization and sharing of the BIM library of the Leca®-products developed and commercialized by Leca® International for the Revit® software.

### 2.2 DESCRIPTION

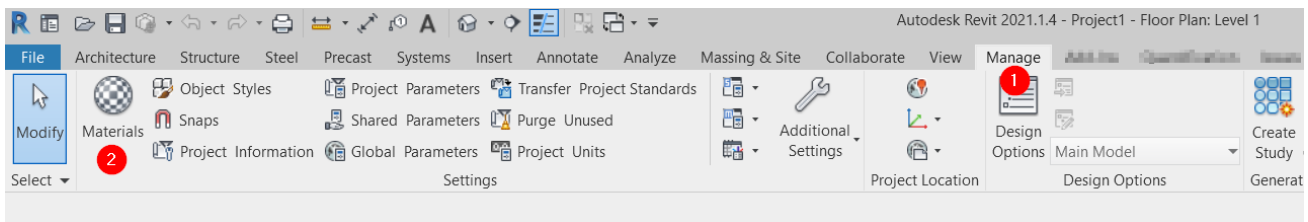
The available file with the extension **.Adsklib** is an Autodesk-format used by Revit®. The files in the BIM Library are created for free sharing and use by designers and service suppliers.

### 2.3 COMPATIBLE VERSIONS

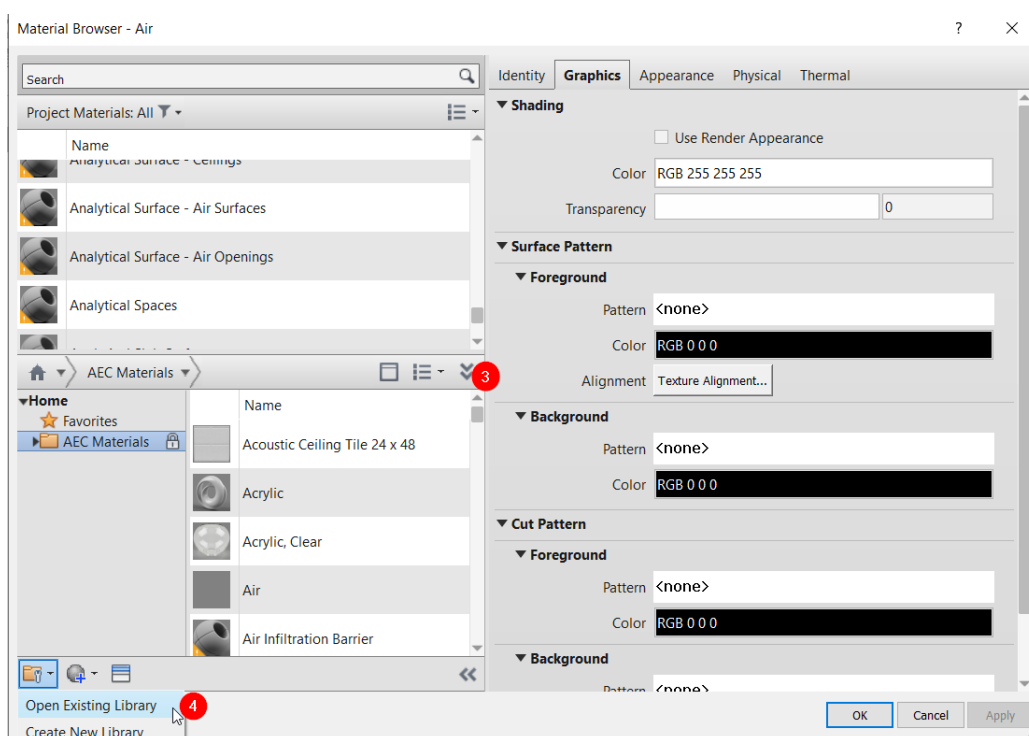
The file formats are compatible with Autodesk Revit® 2021 and 2022 versions.

### 3 IMPORT OF THE PROPERTIES OF LECA-MATERIALS (TECHNICAL DATA)

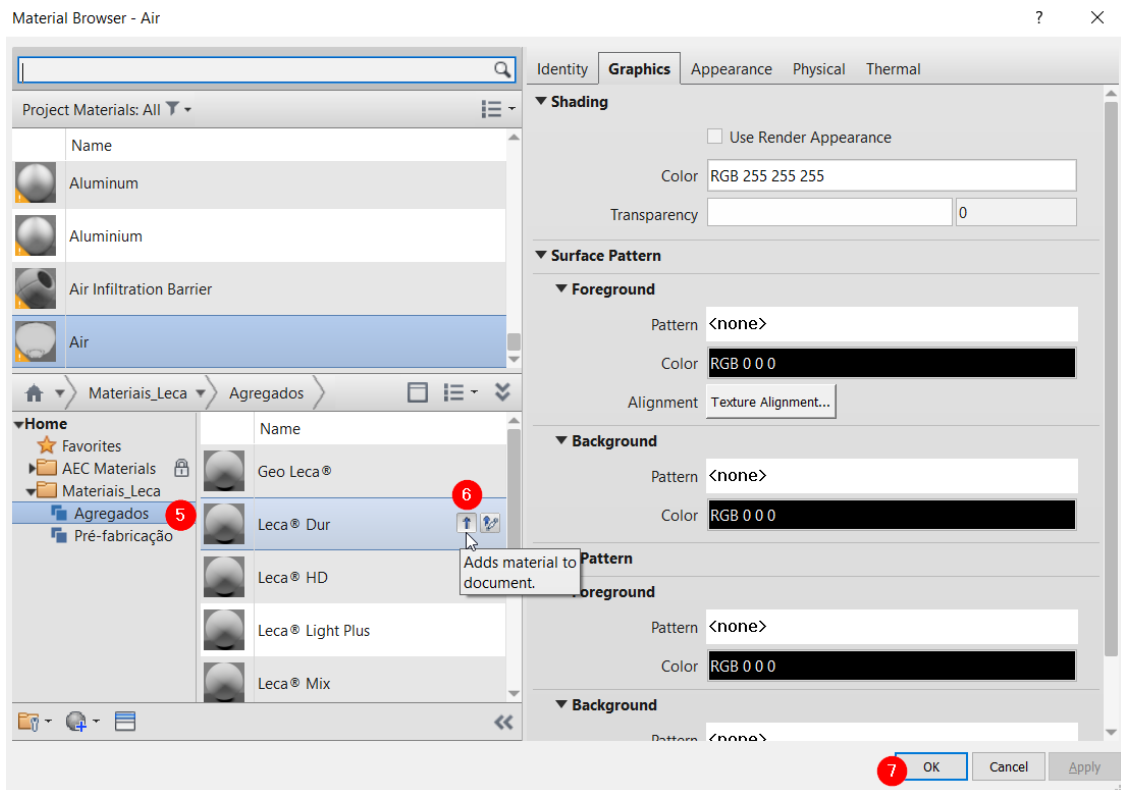
Open the Revit® software, on the **Manage** tab (1), click the materials browser **Materials** (2).



In the materials browser, open **Library List** (3) and add a new existent library: **Open Existing Library** (4). Then, select the provided file: “Materials\_Leca.adsklib”.



To add the material to the project, select **Category (5)**, then click on the arrow symbol menu **(6)** “Add Material to document”. Press ok **(7)**.

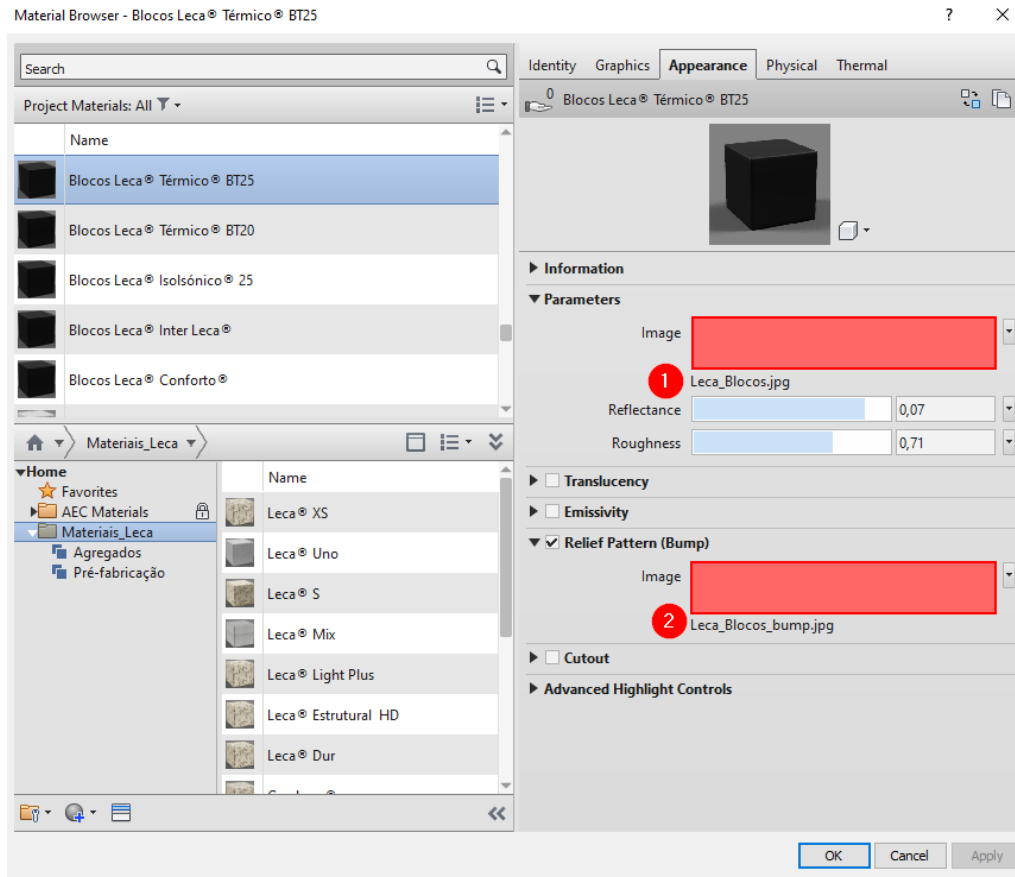


After executing these steps, it is now possible to create a wall or a filling with Leca-materials.

## 4 IMAGE MAPPING

If the software doesn't recognize the associated images, you should follow this steps:

1. Access to the material editor;
2. On the “**Appearance**” tab, click the corresponding names of (1) and (2);
3. Indicate the location of the images attached to this library.



## 5 MATERIALS QUANTIFICATION

All objects can be quantified by using the quantity tables in Autodesk Revit® to configure this effect.

## 6 COMMENTS

Future and updated versions of the available files in the Leca Materials library will be available on [www.leca.no](http://www.leca.no).

Leca International reserves the right to modify this document or the products contained therein without prior notice. For further questions, please contact Leca Norway ([info@leca.no](mailto:info@leca.no)).



Developed by:



[info@pbimis.com](mailto:info@pbimis.com)



[www.pbimis.com](http://www.pbimis.com)