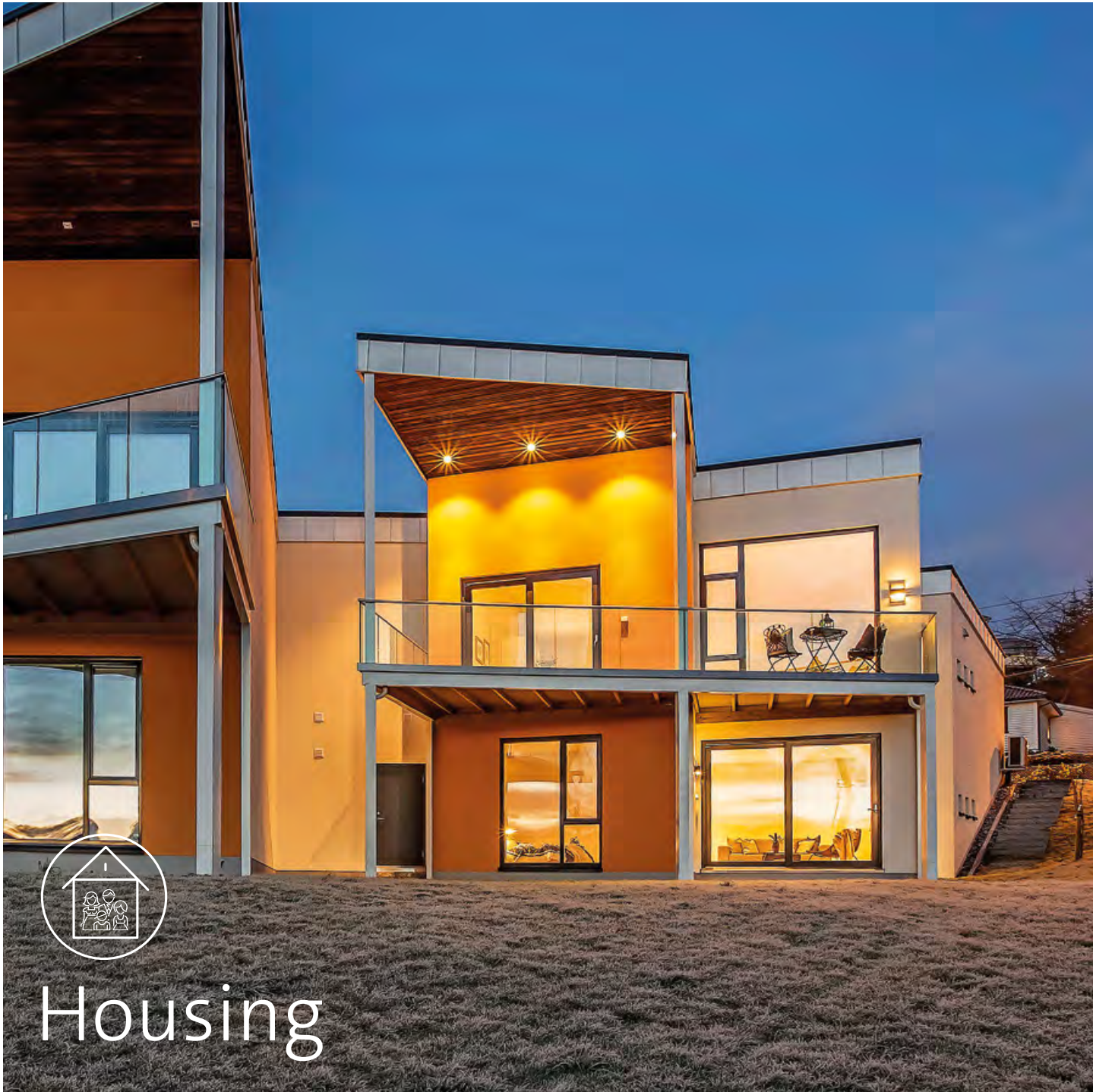




SAINT-GOBAIN



Housing



Infrastructure



Water Management

# Welcome aboard

## Meet LECA®, a company with a great future.

Our sustainable products and solutions help our customers to improve living conditions when applied within housing, infrastructure and water management for everyone, everywhere.

The whole Leca team are fully committed to our mission and this aligns to Saint-Gobain's purpose of "Making the world a better home".

By manufacturing sustainable products and providing our customers with an opportunity to positively impact their environmental footprint throughout the whole product lifecycle, we have made a difference in all our strategic business areas: infrastructure, housing and water management.

Our products cater for comfort and wellbeing through positive thermal and acoustic insulation within our homes and living spaces. We also see the benefits of our products within infrastructure design; creating load compensation, reduced load on structures and offering effective drainage properties, when applied to water management.

Our material also allows for a positive impact on the work environment and transport due to its unique combined lightness and strength. Our products are often thought of as achieving more with less resource.

Furthermore, with our climate rapidly changing, we are now experiencing heavy rain, flooding and storms. Leca® LWA offers exceptional opportunities to develop new solutions in the city space to combat this growing change facing our cities today. And we are not only talking about green roofs, water storage and retention – our products such as Leca® LWA or Filtralite® filter media offer exceptional water cleaning features.

Our organizational ethos on sustainability and protecting the environment is more than the effective engineering results of using our products – it is also what we do in our manufacturing processes within our industrial sites. We recognize the environmental impact generated within our industry and we have actively focused our team on improving our environmental footprint through consistent optimization within all industrial processes.

Leca® LWA is a product of today, with a solid history, and is fully prepared for the needs and challenges of tomorrow. Stay tuned for our next innovations!



**Harald Cholewa** | CEO

# Meet the Group



Being part of Saint-Gobain Group, Worldwide leader in light and sustainable construction, make us both proud and bring responsibilities.

## Corporate Social Responsibility

At Saint-Gobain, Corporate Social Responsibility is at the heart of our strategy. To do so, we must be in tune with our stakeholders. Our goal is to make a positive contribution to Environmental, Social, and Governance issues.

## General principles of Conduct and Action

The Saint-Gobain Group has developed a number of shared principles applied by both management and employees that have guided the Group's activities over the years. Adherence to these principles is a requirement for belonging to the Saint-Gobain Group.

## 5 Principles

- Professional commitment
- Respect for others
- Integrity
- Loyalty
- Solidarity

## 4 Actions

- Respect for the law
- Caring for the environment
- Worker health and safety
- Employee rights

## Top Employer

For several years in a row, Saint-Gobain has been certified as "Top Employer". The certification is based on a self-assessment and external audit shows that we have programs and policies in place.

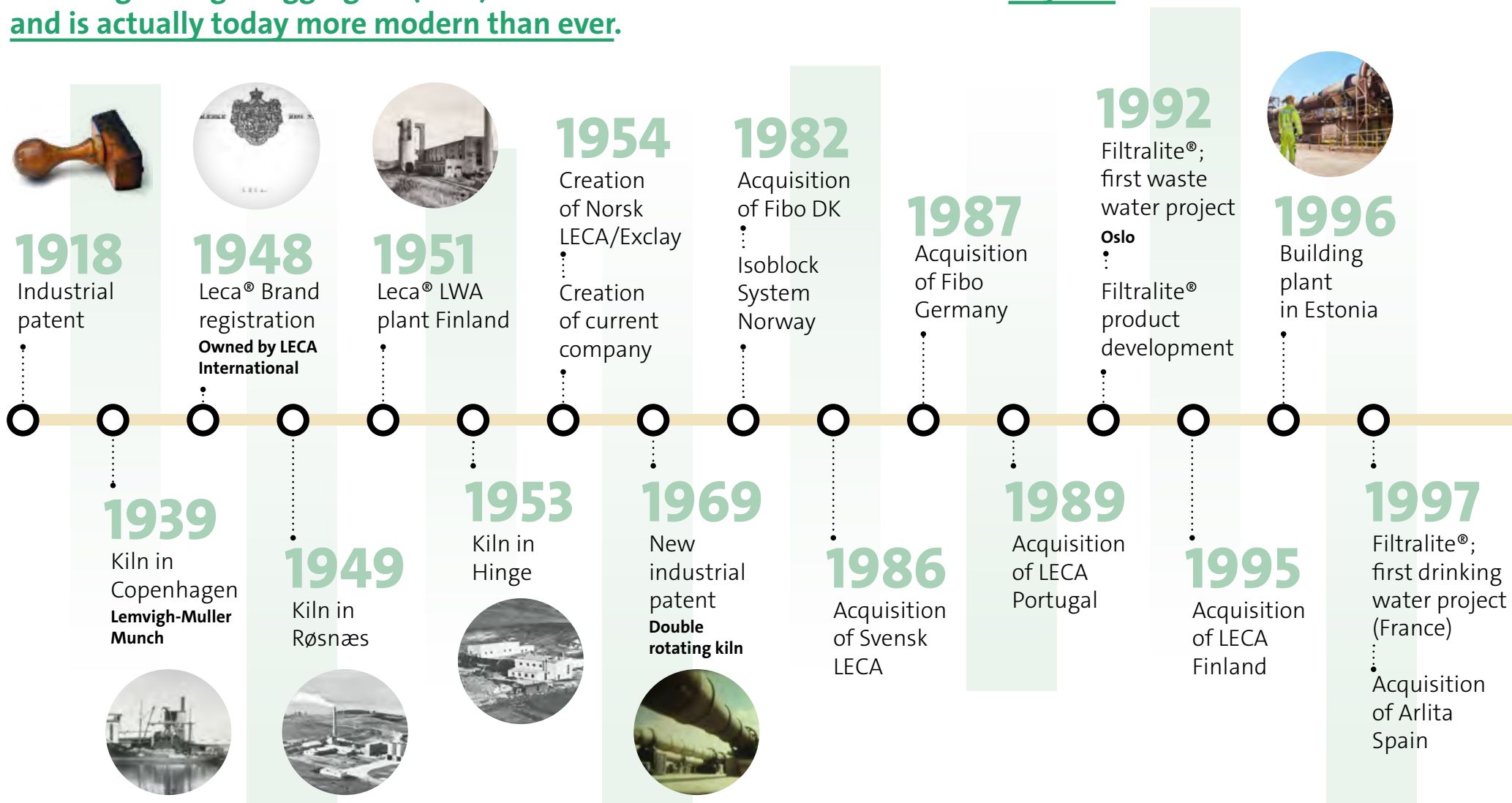
## Me@Saint-Gobain – our people survey

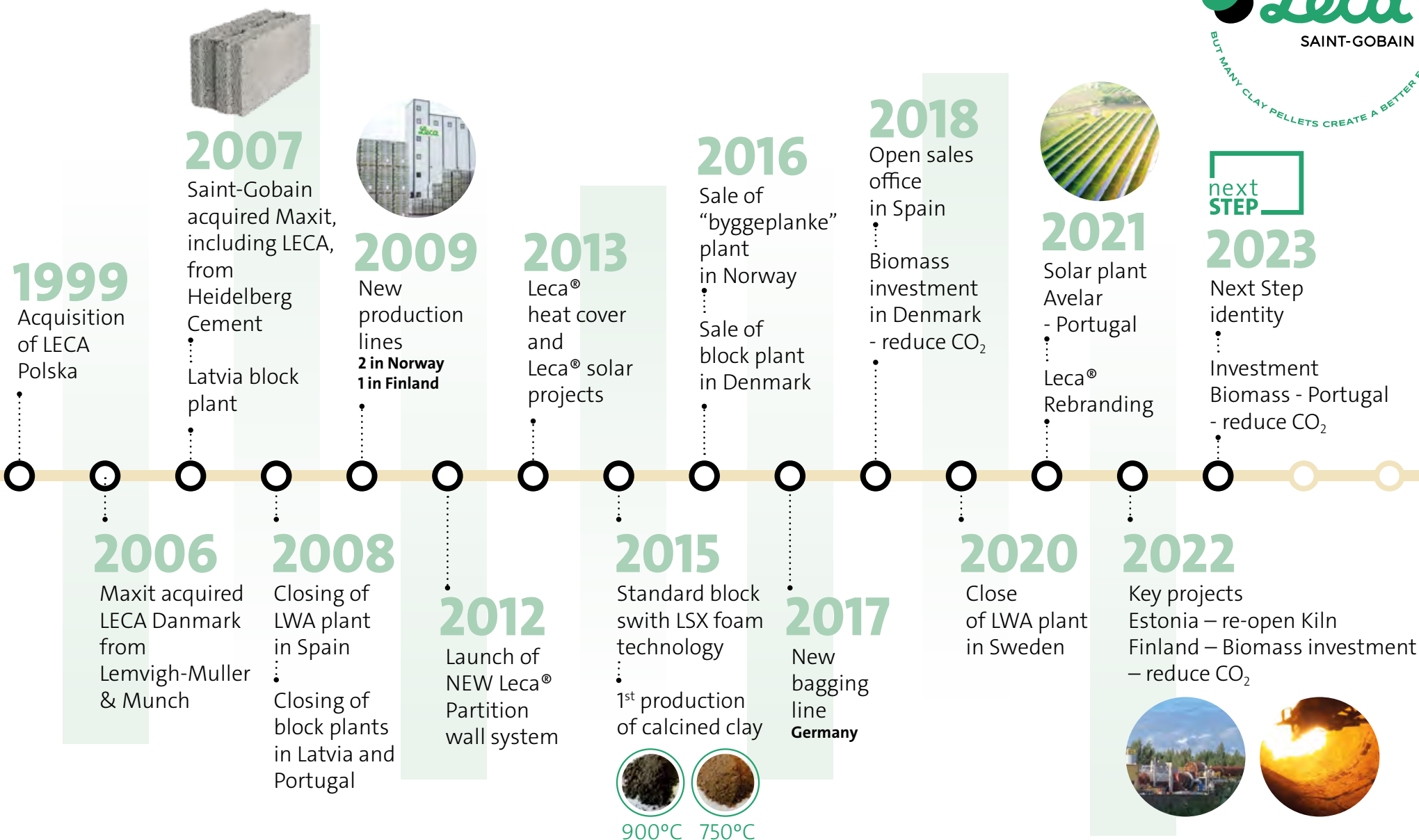
Our goal as an employer is that all our employees should feel valued, do a good job and be "Leca ambassadors". Each year all the employees has the possibility to participate in the yearly survey. The results from the annual people survey are followed up and used by the respective teams in improvement work.



# Once upon a time

**Leca® Lightweight Aggregate (LWA) has been in the market for more than 75 years and is actually today more modern than ever.**





# What is Leca® LWA

**LECA has been around for a long time, so we know that our product works – and lasts. And with experienced knowledge of our production process, focus on innovation and a strong commitment to our customers we know our values.**

Whether doing large-scale or small-scale sustainable construction projects, in order to make the building process cost-efficient and run more smoothly, building materials need to be easy to handle, easy to transport and flexible to work with. Leca® products are exactly this.

While Leca® lightweight aggregate is a simple product, our solutions are innovative. Alone, it is one single expanded clay pellet, but combining the pellets into an aggregate, possibilities become numerous – whether

it is laying the foundation for construction, building roads and walls, or developing drainage solutions. The simplicity of the product makes it extremely flexible in the construction process.

We have been around for a long time, so we know that our products work – and they last. With a local presence in more than 12 European countries, we continue to develop and innovate ourselves looking for new partnerships and business models that propel Leca, our partners and the environment forward.



**Because together, we build for the future.**

# Who makes all possible

Our people are extraordinary, committed, reliable, engaged and highly skilled to provide you always the best solutions.



LECA is a proud company in constant development



And each one of us has an important role in the sustainable future of LECA.

# Who represent us worldwide

A dedicated international management team to support the country focus, aiming for international growth.



**Harald  
Cholewa**

Managing Director  
CEO

**01** year in LECA

**17** years of experience



**Jacek  
Nowakowski**

Finance  
Director

**08** year in LECA

**22** years of experience



**Hanna  
Cronström**

Human Resources  
Director

**01** year in LECA

**16** years of experience



**Susanne  
Bay Jensen**

Operations  
Director

**32** years in LECA

**33** years of experience



**Søren  
Aabye**

Sales  
Director

**01** year in LECA

**34** years of experience



**Kim  
Rosenbom**

Business Development &  
Sustainability Director

**23** years in LECA

**31** years of experience

# More than a Vision, we are visionary



**We actively take responsibility in protecting the environment and producing and delivering resource efficient products with a specific focus on our environmental footprint.**

We actively take responsibility in protecting the environment, producing and delivering resource efficient products with a specific focus on our environmental footprint.

Our products positively contribute to living conditions by reducing the negative impact from climate change and will also clean and filter the water of tomorrow...



**To improve living conditions and protect the environment**

# Our Global presence

With a local presence in more than 12 European countries, we continue to develop and innovate ourselves by looking for new partnerships and business models that propel Leca International, our partners and the environment forward.

**#1**

Market leader  
in Europe

**>400**

Employees

**12**

Countries

**11 + 4**

Production  
sites

**= 134 m€**

Revenue 2022

**-50% CO<sub>2</sub>**

**reduction**

Target 2030,  
compared to 2017,  
Scope 1, GHG

**>6%**

Capital  
expenditure

**3**

Key Market



Housing



Infrastructure



Water  
Management



# More than a brand

Strong brands, valued by customers  
in all market segments.



FIBO®



ARLITA®



FILTRALITE®



A portfolio of well recognized brands

**EXCA**  
EUROPEAN EXPANDED CLAY ASSOCIATION

LECA is a member of the European  
Expanded Clay Association

# Our Next STEP

We are on an exciting journey to reduce our CO<sub>2</sub> footprint and support all our customers and partners on their sustainable projects.

We believe in a sustainable construction, and we are strongly on our way towards a sustainable future. However, one actor or company cannot solve the sustainability of construction alone, which is why we strongly believe in the power of cooperation and partnership.

As an example of LCA Corporation we can mention Isover, Glava and Ecophon. Leca® is incorporating surplus material from the mentioned companies to improve the overall LCA.



Leca® LWA with recycled content embodied



Specific Leca® LWA EPD cradle-to-grave



Leca® LWA is 100% recyclable material



BIM Library for our Leca® LWA products



next  
STEP

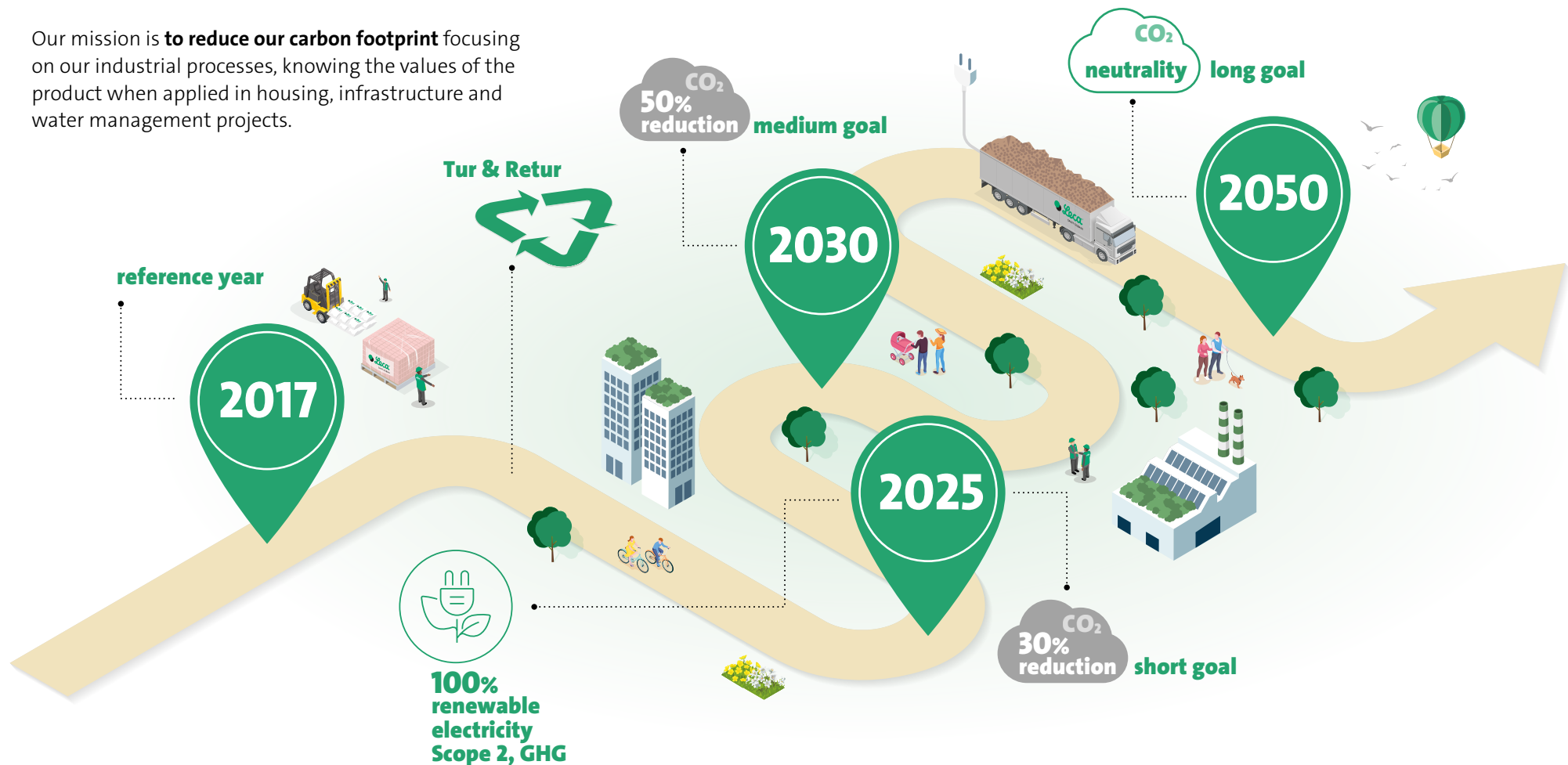


Let's take the next STEP together and build a sustainable future.

# Our Journey

This will impact all products and solutions enhancing Leca® LWA as a sustainable product for the future.

Our mission is **to reduce our carbon footprint** focusing on our industrial processes, knowing the values of the product when applied in housing, infrastructure and water management projects.



# Know our strategic areas

Leca® lightweight aggregate is a sustainable product for the future, for your Housing, Infrastructure or Water Management project.



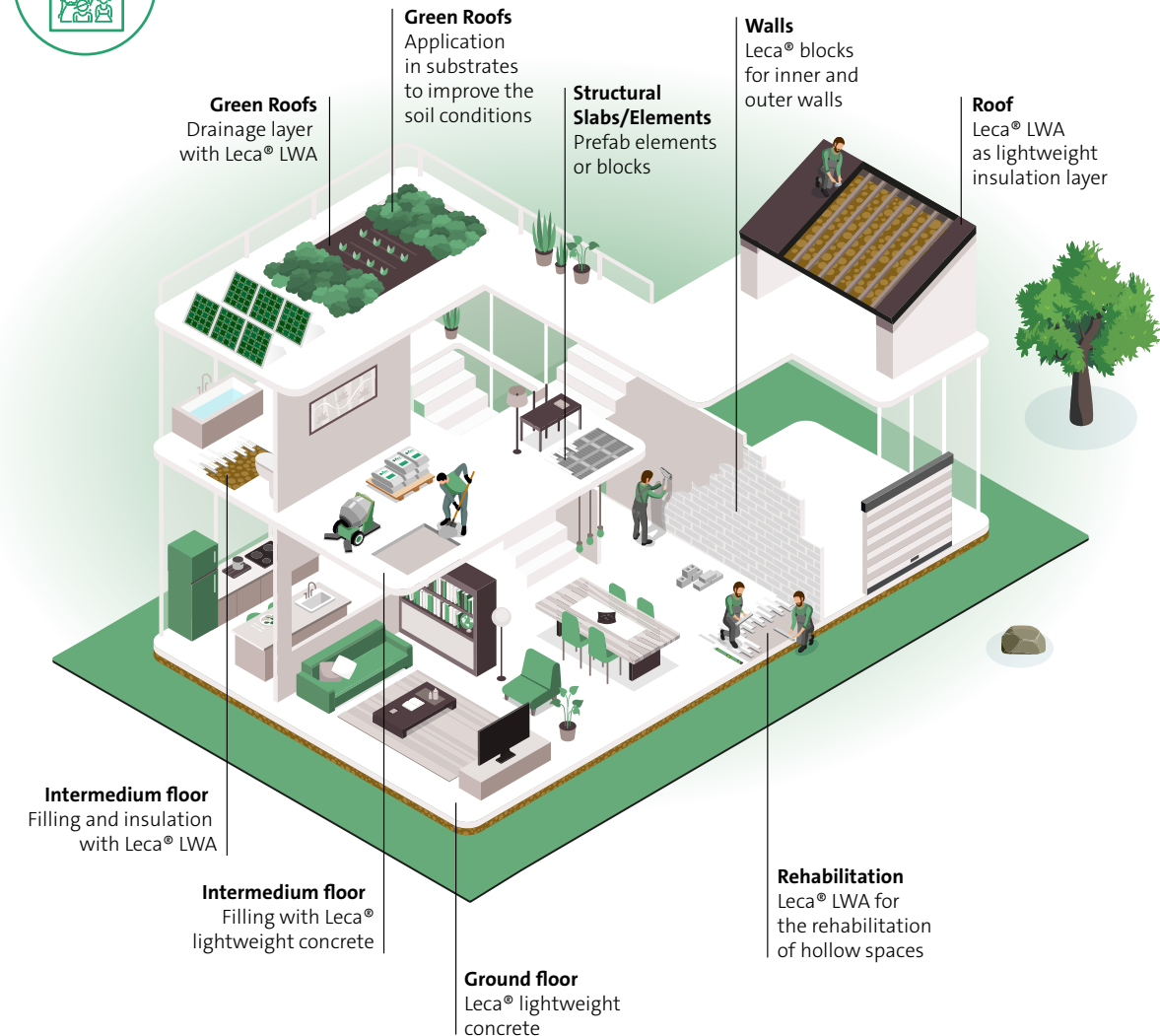
Housing

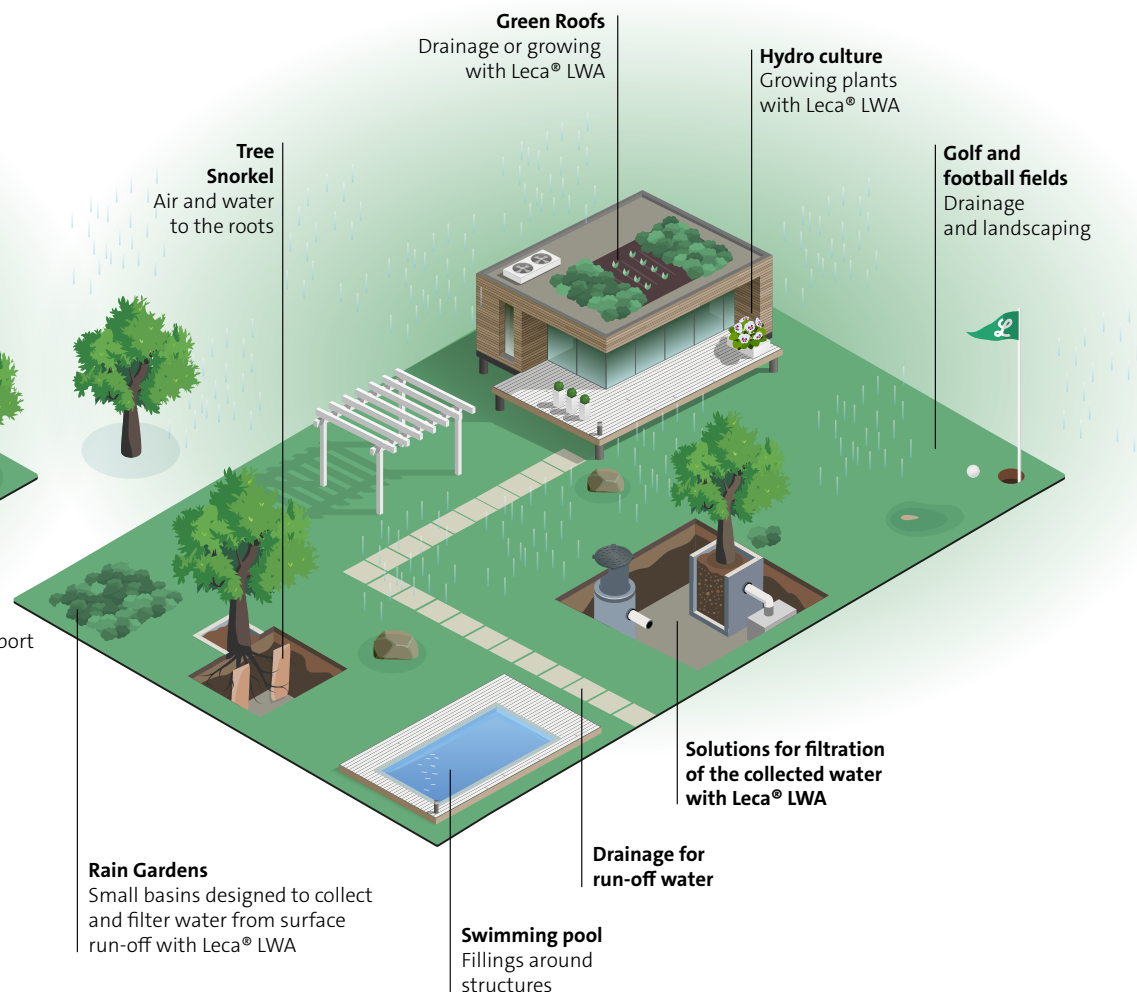
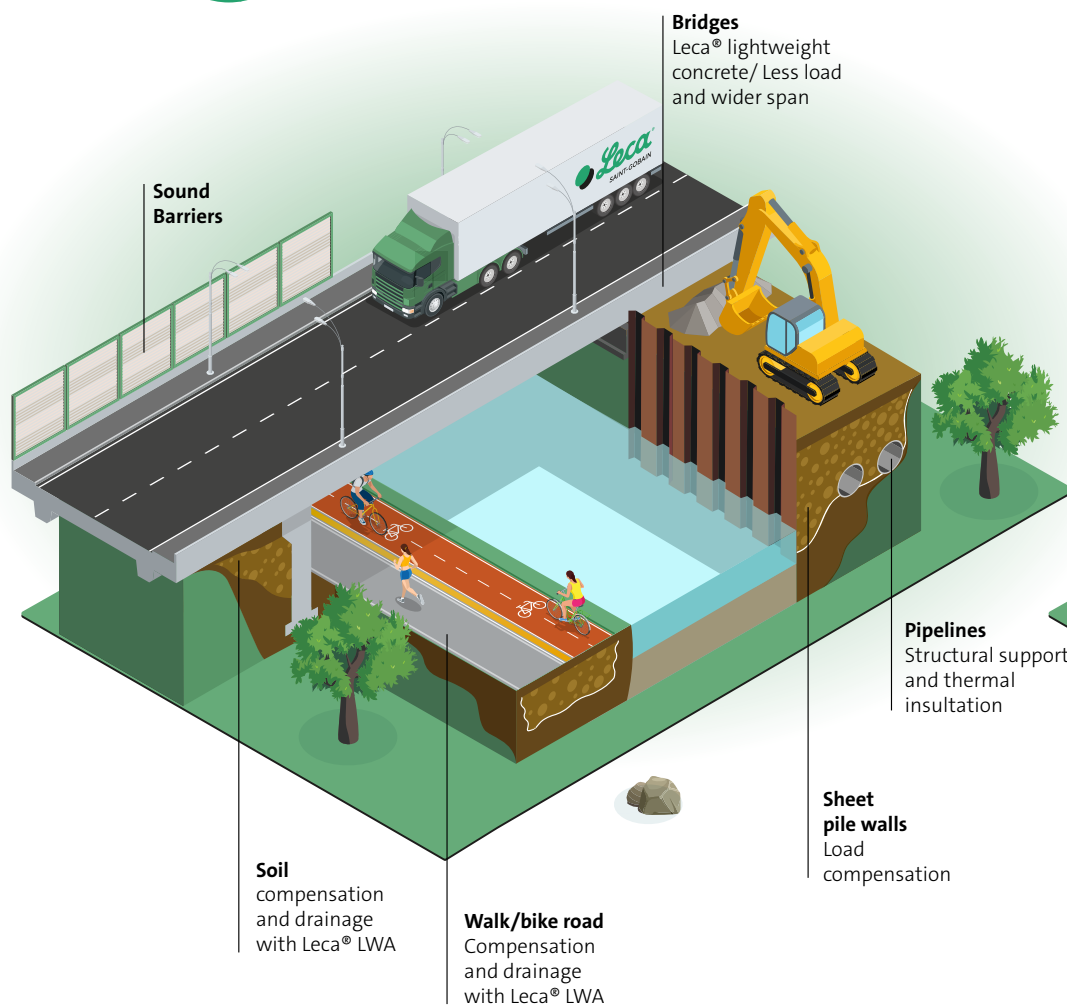


Infrastructure



Water Management





# We are a natural resource

During our production we give back to the Planet more than we take, expanding the raw material up to 5 times.

Leca® LWA is a high quality, durable lightweight aggregate, that has been used for over half a century.

Leca® LWA is produced in form of a round shaped brown pellets with a resistant exterior skin and a porous and lightweight interior nucleus.

The main characteristic of expanded clay is **low density** combined with **high strength**. In addition, the aggregate holds many other important properties as drainage, absorption, retention, thermal insulation, etc.



**Leca® LWA is providing a wide range of properties vital for sustainable construction.**



**It might be described best as an “All-in-One” aggregate.**



# Know our process

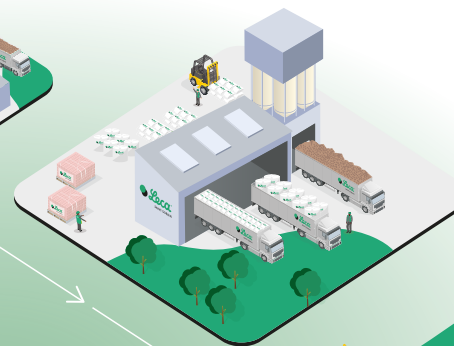
From abundant clay to sustainable building material, without compromising the environment and biodiversity.



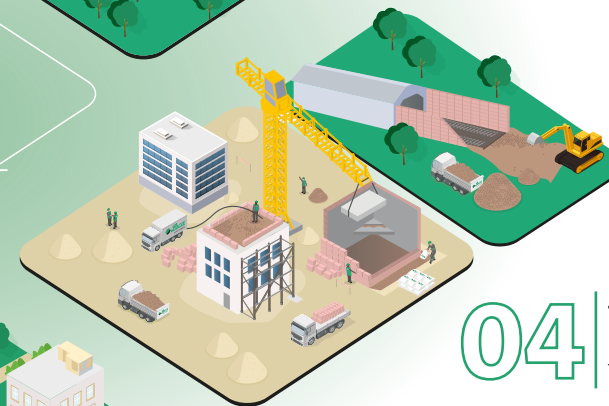
**01 RAW MATERIAL**  
Focus on decreasing the consumption of raw materials.



**02 PROCESSING**  
A sustainable production transforming 1m<sup>3</sup> of clay in to 5m<sup>3</sup> of Leca® LWA.



**03 HANDLING**  
An eco-friendly way to arrive to you, maximum utilization of the transport volume in bags or bulk.



**04 TRANSPORT & CONSTRUCTION**  
Fast and easy installation with focus on health and safety.



**05 LIVING**  
Comfortable and healthy living spaces, saving energy with lowest possible maintenance.

**06 REUSE RECYCLE**  
Zero waste, is that really possible? Leca® LWA can be easily reused or recycled.



# All-in-one solution for our customers

By combining the All-in-One features such as being durable, strong, lightweight, water absorbent and recyclable, we bring more sustainable characteristics to your project.



## House Building

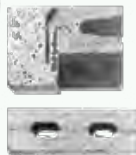
### Large variety of blocks

Examples:

Ext wall, partition wall, foundation, basement blocks

**Used mainly for the small house market but add value to industrial and service building due to:**

Good thermal and sound insulation characteristics as well as fire protection and moisture resistance



## Infrastructure

**Used in construction of roads, railways and harbors where less load, less pressure and high drainage is needed**

Examples:

Construction of tunnels  
bridge abutments



## Water Management

### Filter

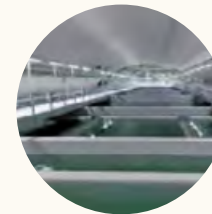
Water filtration and purification for drinking and waste water

### City

Green rooftops & Water management infrastructure

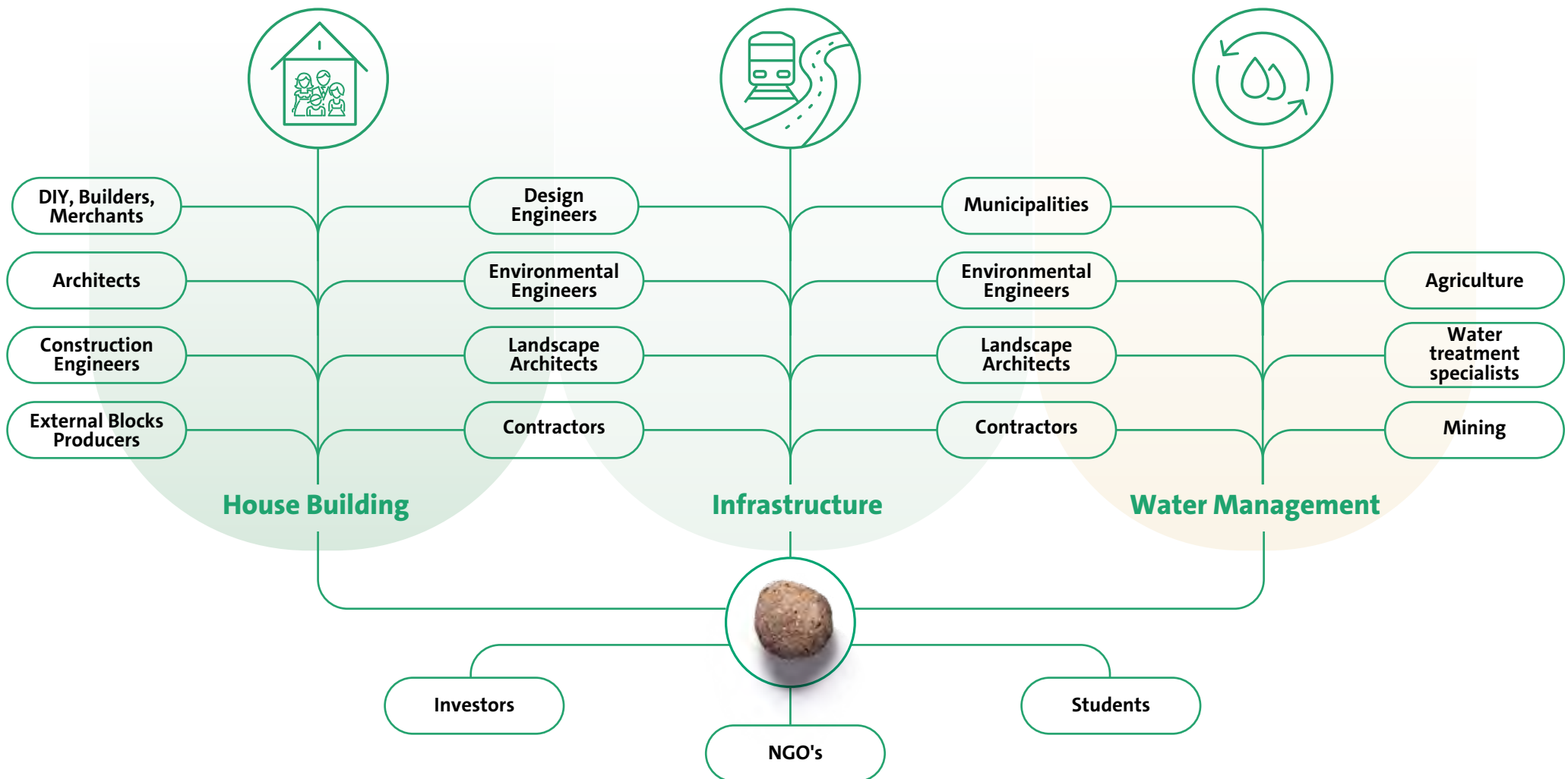
### Agribusiness

Air bio filters, run-off farm land and water, covers for manure tanks/lagoons



# Who are our clients

Our product has a broad range of applications and can serve multiple target markets, making it a versatile solution for various industries.



# This is Leca® LWA

Alone, it is one single expanded clay pellet, but by combining the pellets in to an aggregate,  
possibilities become numerous.

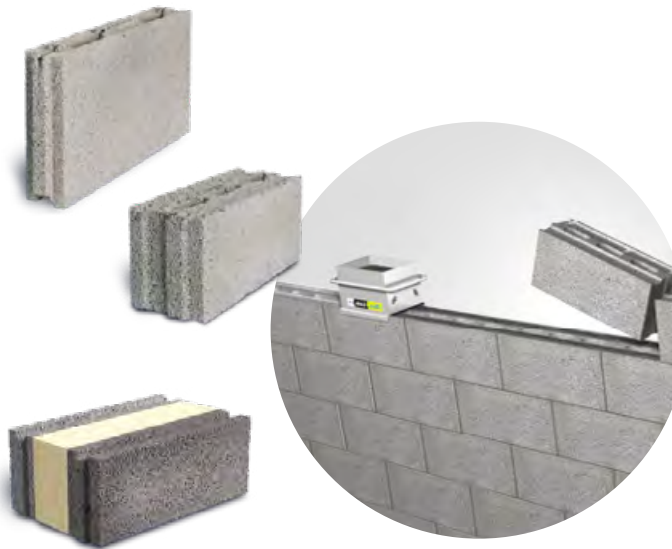
## Leca® LWA Lightweight aggregate

Leca® LWA can be supplied in various densities and gradings for Housing, Infrastructure or Water management projects.



## Leca® Blocks

Besides the aggregate the company also produce Leca® Blocks and supply a large number of lightweight concrete block and element producers around Europe.



## Filtralite® Filter media

High quality filter media for Drinking Water and Waste Water treatment plants, especially for pre-treatment in desalination plants.

Direct replacement of sand & anthracite in DW or WW plants.



**More water for less money**

# Leca® LWA in bags



Leca® LWA can be supplied in bulk, big-bags or a variety of small bags. For special building sites where access is an issue or the material need to be lifted to higher levels, we can supply the Leca® LWA with blowing vehicles for fast and easy application.

Small bags can be supplied in sizes from 5 liters to 50 liter bags, depending on market / customer needs. Besides the traditional Leca® LWA in bags we also have an **extensive range of special products**, tailor made for specific applications like:

- | Leca® SAFE (Winter streu)
- | Leca® Uno (Premix floor screed)
- | Leca® Flower (Hydroponics / soil mix)
- | Leca® 800 (LW concrete aggregate)
- | Leca® Mix (Premix floor screed)



Leca® LWA can be supplied in different formats to facilitate the work at site.

TOGETHER, WE BUILD  
FOR THE FUTURE.

 [www.leca.com](http://www.leca.com)



ELEMENTAL  
CHLORINE  
FREE  
GUARANTEED



This brochure was printed in XPER a Fine Paper completely biodegradable and recyclable.